

The most professional wall panel manufacturer in the world

PVC



ISO 14001 Registration
No. 6X0E003-00



ISO 9002 Registration
No. 6X0Y001-04

UNIQUE
WALL PANELS
CEILING PANELS
JOINTER AND CORNICE
WALL SKIRTING (BASEBOARD)

Style. Unlike any other.

PVC WALL PANELS & CEILING PANELS

◆ APPLICATIONS & ADVANTAGES

- Interior and exterior use for walls and ceilings in office, conference room, warehouse, bathroom, family room, garage, arcade, and green house.
- Maintenance free and easy to clean- just spary off.
- Brightens the interior for fresh clean look.
- Sanitary - resists rot, mold, mildew, and chemicals.
- Easy to install and light weight.
- Tongue and groove design, no exposed fasteners.
- Life time warranty.
- More than 3,000 available colors in white, sandstone, gray, woodgrains...
- Matching trims available.



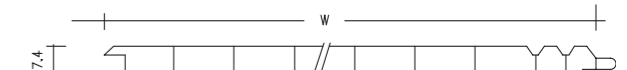
◆ TYPES AND SPECIFICATIONS OF PVC WALL AND CEILING PANELS



Deluxe Type A



Deluxe Type D



Deluxe Model N



Deluxe Type H



◆ MATERIAL SPECIFICATIONS

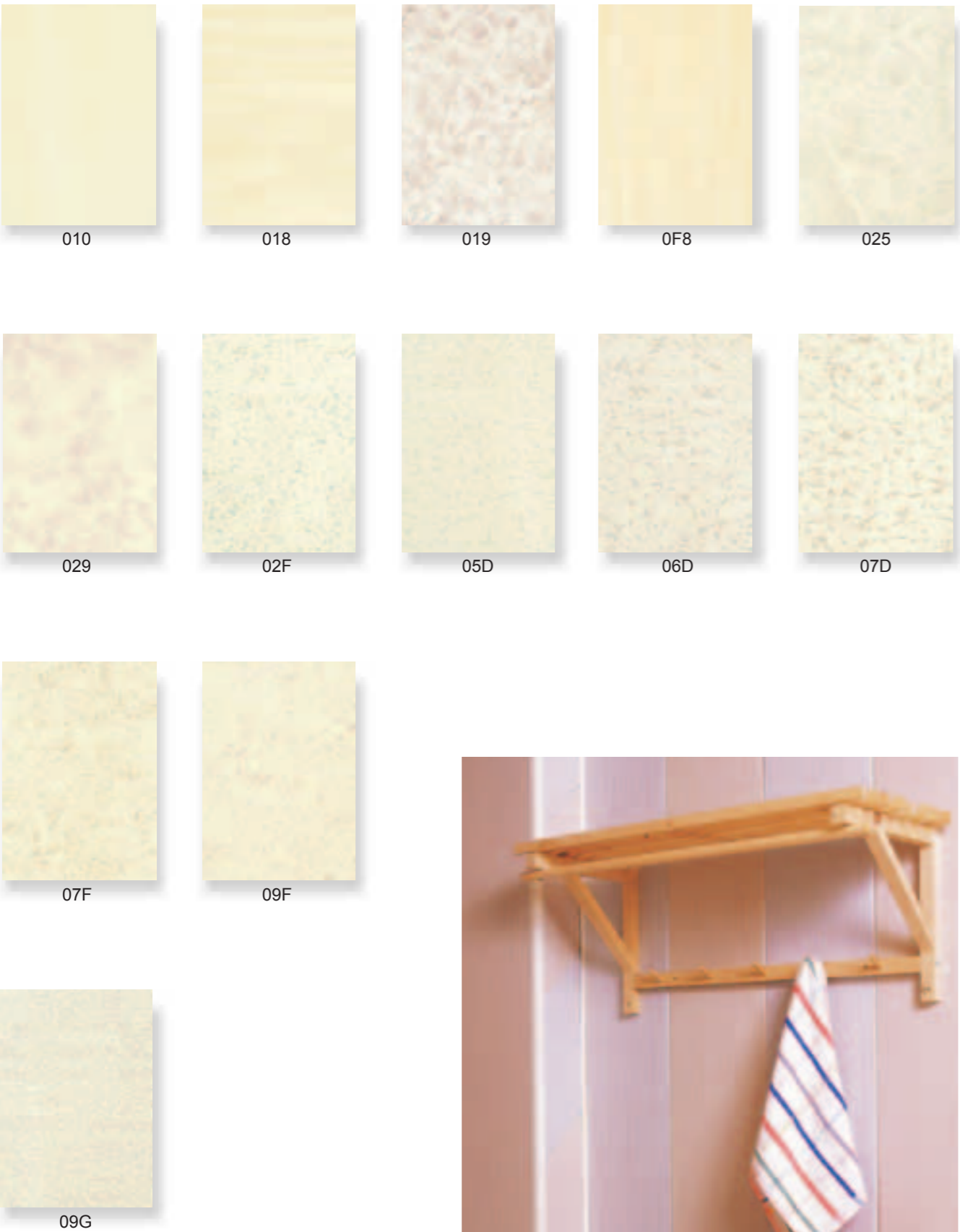
Type	Width(mm)	Container Load (Linear Meter)			Popular Colors
		20'	40'	40' H.Q.	
A	120	24,100	48,200	55,600	Printed: (available for Type A, D, H) 010, 018, 019, 0F8, 025, 029, 02F, 048, 05D, 06D, 07D, 07F, 09F, 09G Laminated: (only available for Type A) 0DT, 1DT, 2DT, 3DK, 3DT, 5DT, 8DT, 36T, 37T, 07M, 02C, 0N0, 0C8, 0C9, 086, 2CP, 866, ABQ, 1GT, BQ1, BQ2, BQ3, C81, C0X, CUA, CW1, CXC, GG5, GG6, GG7, GG8, GG9, HBQ, HCT, HG5, HJ1, HJ2, HJ4, JD1, JH1, JH2, JM1, JM2, JQ1, JY0, KCT, KK5, QB1, QB2, QF1, QF2,
	180	17,800	35,600	40,800	
	243	12,500	25,000	28,800	
	300	10,500	21,000	24,300	
N	243	9,400	18,800	21,000	
D	180	17,500	35,000	40,000	
H	243	12,700	25,500	28,500	

Range of Length: 1.8M ~ 5.8M

- ◆ Our PVC panel showed good resistance to water testing for 1440 hours by :
 1. submerging panel in water of 25°C
 2. exposing to steam that is rising from hot water of 60°C.

◆ POPULAR COLOR CODE

■ PRINTED



◆ POPULAR COLOR CODE

■ LAMINATED



◆ POPULAR COLOR CODE

■ LAMINATED



◆ POPULAR COLOR CODE

■ LAMINATED



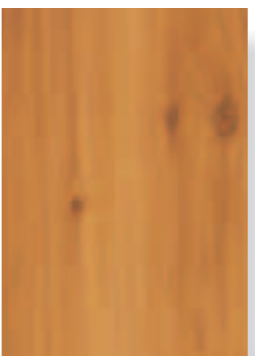


◆ POPULAR COLOR CODE

■ LAMINATED



JQ1



JY0



JYA



F81



F82



QF1



QF2



HJ1



HJ2



HJ4



JD1



JH1



JH2



JM1



JM2



Remarks:
There are more than 3,000 fascinating colors and designs available, which will be sent on request.

◆ POPULAR COLOR CODE

■ LAMINATED



HK1



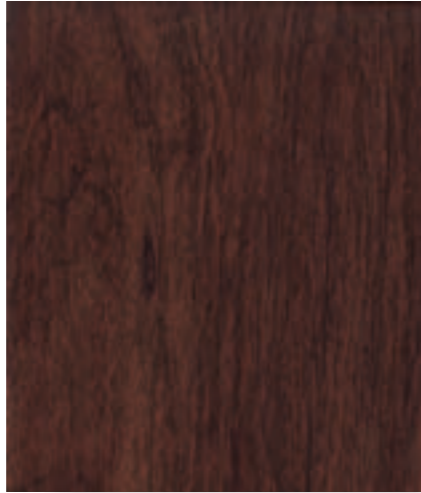
HK2



HK3

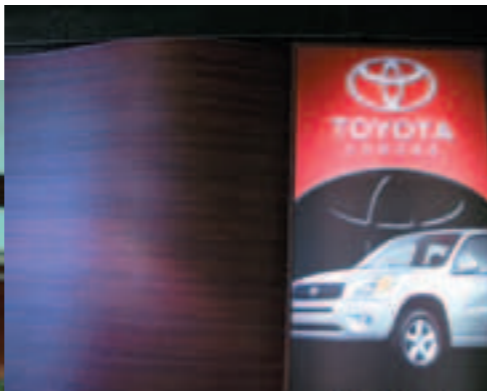


HK4



HK5

Wall of Passion and Fascination



More than 3,000 fascinating colors and designs to delight your infinite imagination.
Put Unique Wall Panels on your decorating list.

◆ POPULAR COLOR CODE

■ LAMINATED



AE1



AE2



AE3



AE4



DA1



DA2



DA3



DA4



QK1



QK2



QK3



QK4



QK5



QK6



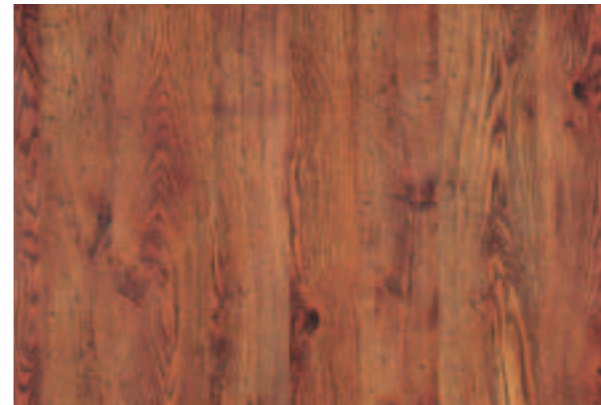
QK7



QK8

◆ POPULAR COLOR CODE

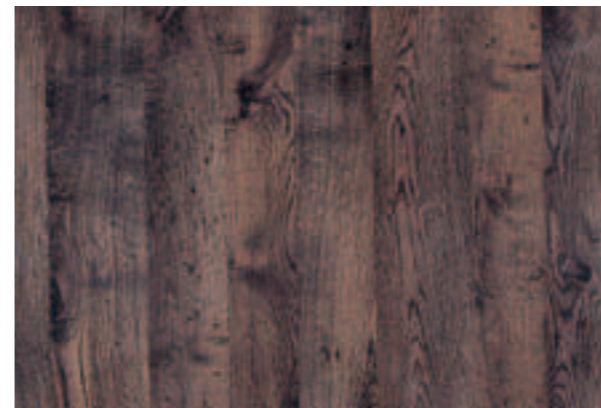
■ LAMINATED TYPE - ANTIQUE WOOD



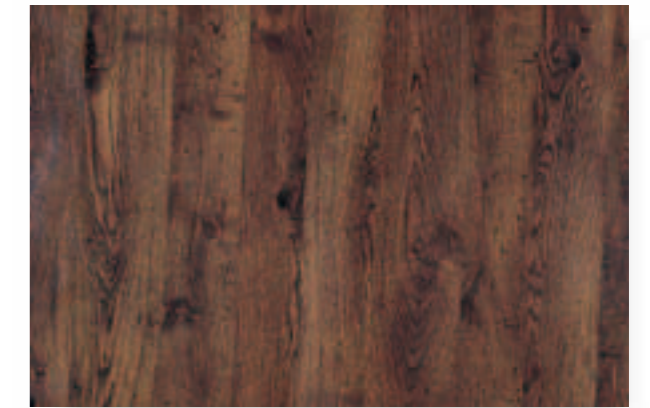
OM1



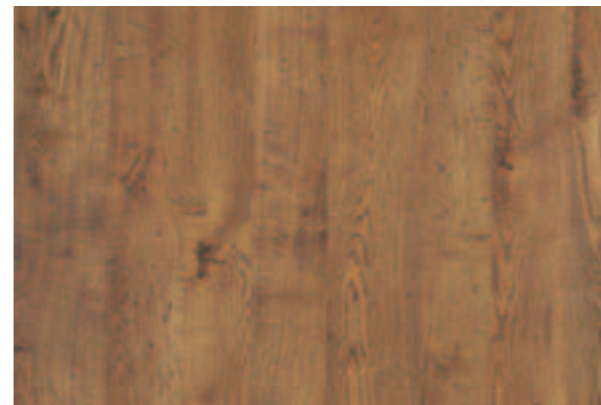
OM2



OM3



OM4



OM5



OM6



OM7

◆ POPULAR COLOR CODE

■ LAMINATED TYPE - ANTIQUE WOOD



AN1



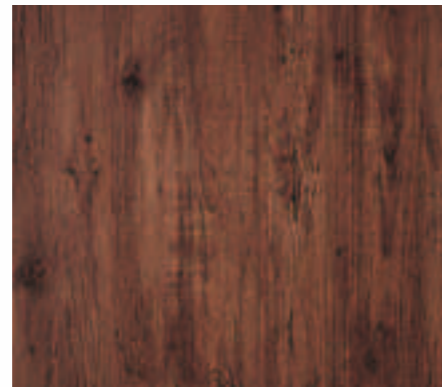
AN2



AN3



AN4

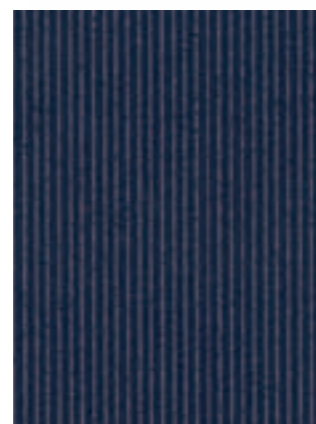


AN5

■ LAMINATED



PY1



PY2



PY3



PY4

◆ POPULAR COLOR CODE

■ LAMINATED



9D1



9D2



9D3



9D4



9D5



9E1



9E2



9E3



9E4



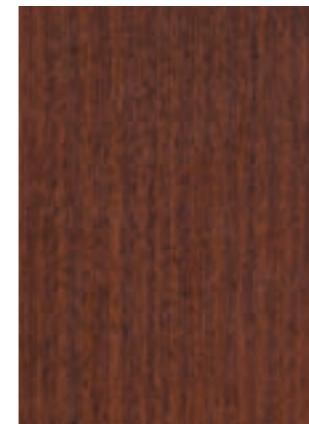
9E5



9G1



9G2



MG1

◆ POPULAR COLOR CODE

■ LAMINATED TYPE - BAMBOO SCREEN



AH1



AH2



AH3



AH4



AH5



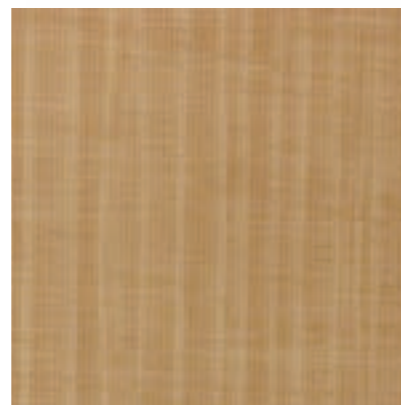
AH6



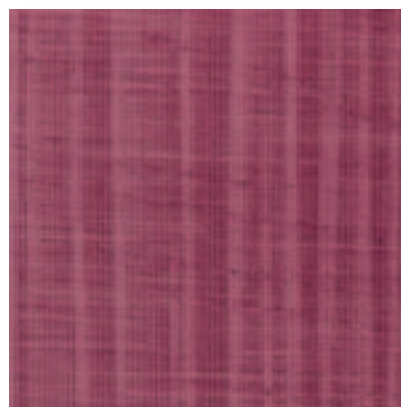
AH7



AH8



AH9



AHA



AHB

◆ POPULAR COLOR CODE

■ LAMINATED



CA1



CA2



CA3



CA4



CA5



CA6



CA7

PVC JOINTER · PVC CORNICE

After completing the wall surface ornamental work, more finish effect could be added to the overall decoration by matching with appropriate jointer and cornice. In this regard, our PVC cornices for ceiling are demonstrating such a "finish invigorating" function.

As for the finish and the aesthetic touch of the internal and external corners on the wall surface, various kinds of PVC jointers for wall panels are also available for our customers to choose from. It not only highlights the overall decoration but is also convenient for the decoration workers.



◆ TYPES AND SPECIFICATIONS

■ PVC Jointers for Wall Panel

Item	Figure	Demonstration 1	Demonstration 2
External Corner Joint Strip			
Internal Corner Joint Strip			
Nail-Covering End Strip			
"7" Type End Strip			
Convex Dado Rail			
Concave Dado Rail			
"1.5" Corner Protector			
Wall Vents T-Bar			

■ PVC Cornice for Ceiling

2.0" Cornice

1.5" Cornice

1.2" Cornice

1.0" Cornice

0.9" Cornice



◆ COLOR CODE

■ POPULAR COLOR CODES FOR JOINTER AND CORNICE:



010 / White



020 / Grey



160 / Red



360 / Light Brown



380 / Coffee

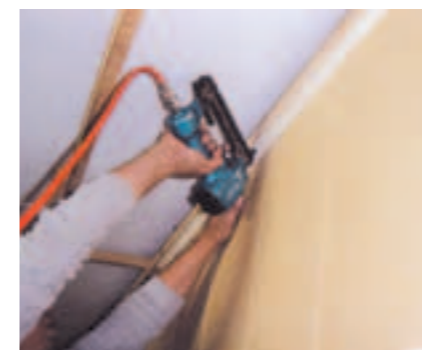


390 / Dark Brown

■ MORE COLORS UPON REQUEST



◆ INSTALLATION STEPS FOR WALL PANELS AND CORNICE

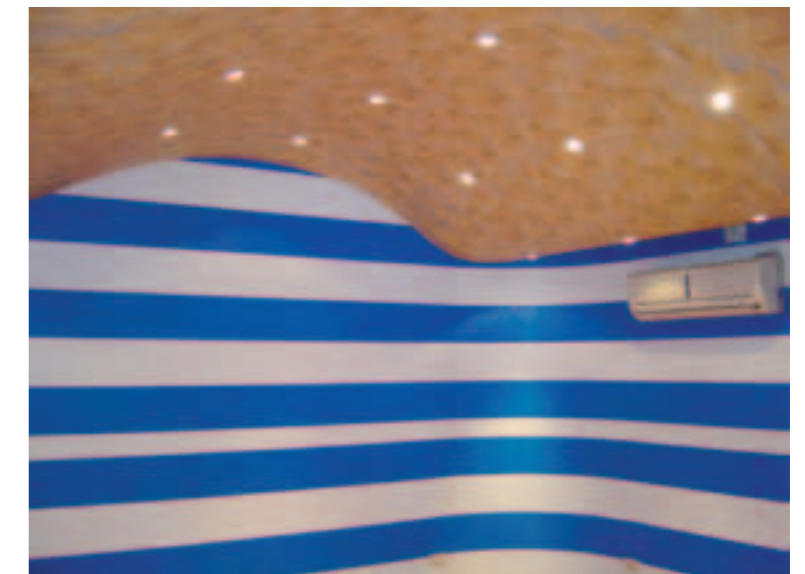


STEPS:

- (1) Area measuring: Cut the wall panels ready by the required length and number.
- (2) Nail the internal or external jointers onto two sides or three sides of the wall panel (or the ceiling panel).
- (3) Take the first wall panel. Then push it tightly along the jointer and then secure with the iron or steel nails. After that, take the second wall panel and secure it by the method mentioned, and so on.
- (4) After completing the installation of all wall panels, nail the PVC cornice for ceiling or set the end strip to complete the work.

<< Notes>>

- (1) Upon hitting the internal and external corners during the work, please use the internal and external corner joint strips to facilitate the work.
- (2) When working on the corner and the last piece, be sure to cut the wall panel by the required width. It is imperative to use the joint-strips for the desired match.
- (3) If the wall panel adjacent to the jointers is not fixed by iron nail (or steel nail), then use the heavy-duty adhesive to reinforce the construction effect.
- (4) Please use the nail to fix the PVC cornice.
- (5) The "7" type end strip can be used to decorate the ceiling and the wall surface without nailing.

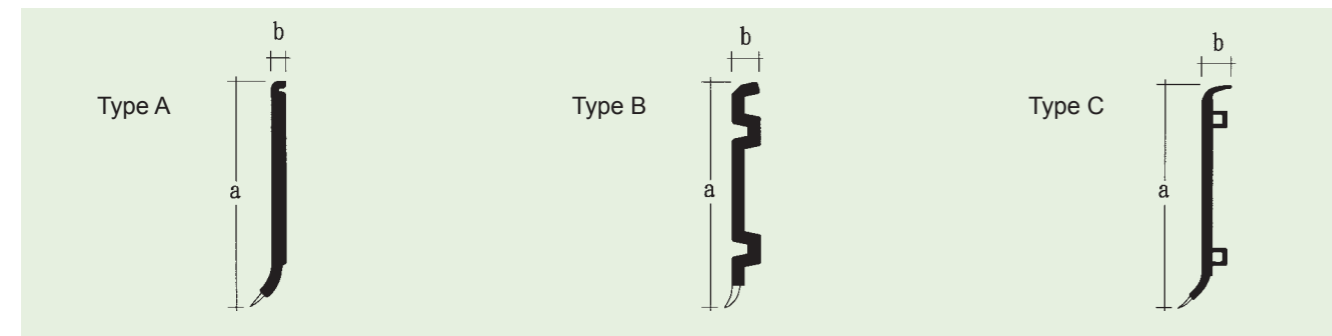


PVC WALL SKIRTING (BASEBOARD)

Our product presents fashionable look pertaining to the natural materials in displaying the features of elegance, innovation, beauty, graceful sense, durability, acid/alkali resistance, anti-insect, non-ignition, non-decadence and non-conductivity. It can be used at the footings either in your home or in the office.

◆ TYPES AND SPECIFICATIONS OF PVC WALL SKIRTING

■ PVC WALL SKIRTING



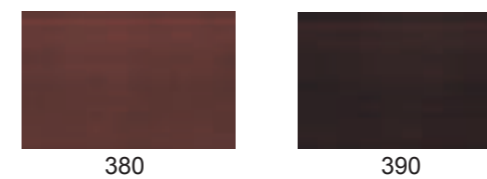
Type	Height a	Thickness b	Container Load(Linear meter)			Colors
			20'	40'	40' H.Q.	
A	100m/m	5.0m/m±0.5	27,800	55,600	63,100	Plain: 380, 390 Printed: 388, 398 Laminated: 011, 013, 022, 048, 065, 082, 086, 088, 148, 348, 365, 37T, 948 More colors upon request
	85m/m	5.0m/m±0.5	51,500	103,000	116,900	
B	100m/m	8.5m/m±0.5	27,800	55,600	63,100	
C	100m/m	10m/m±1	29,000	58,000		
	85m/m	8.5m/m±1	37,000	74,000		
	60m/m	6.0m/m±1	45,300	90,600	102,500	

Range of Length: 1.8M ~ 5.8M

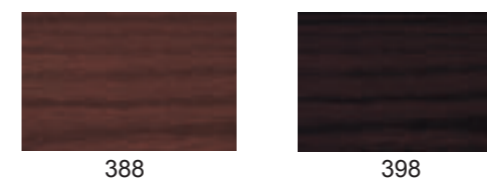


◆ COLOR CODE

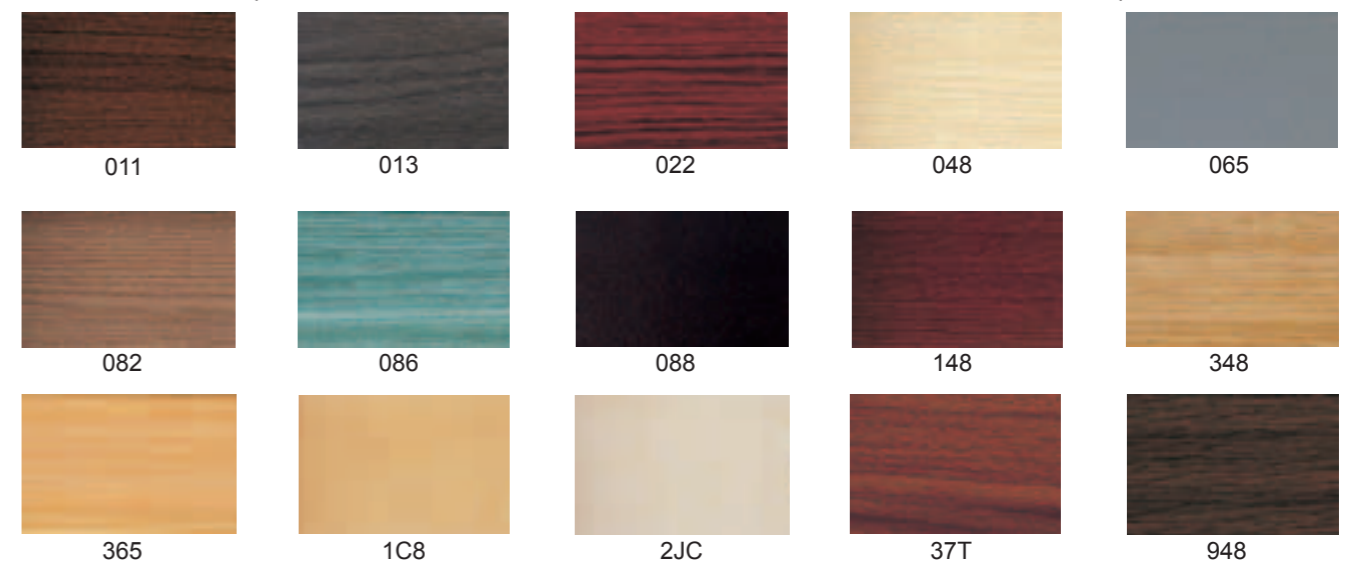
■ PLAIN



■ PRINTED



■ LAMINATED(THE COLORS CAN BE ALSO APPLIED TO WALL PANELS.)



◆ INSTALLATION STEPS FOR PVC WALL SKIRTING

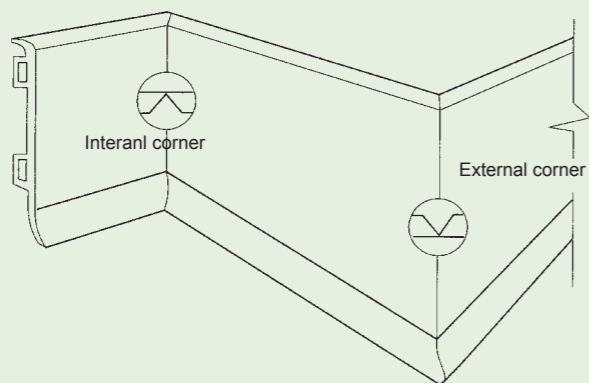


STEPS:

(1) As a first step, trim and clean the place where the baseboard will be installed.

(2) For the flat A-type or C-type foam baseboard, please use V-Cut at the internal and external corners. (Figure. 2) The nailing place for the A-type baseboard is the same as the B-type. As for the C-type, the hollow space is provided on the backside.

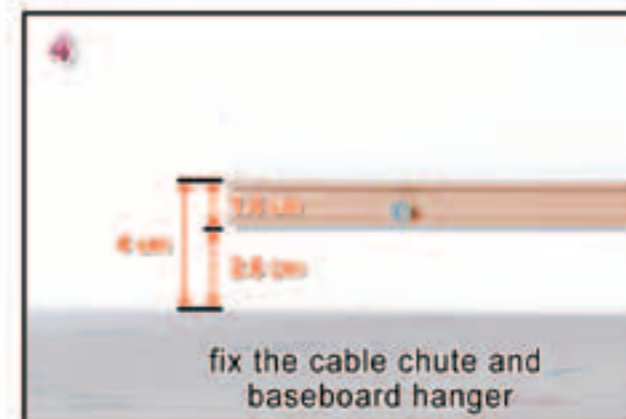
Internal and External corner V-cut method



Wall Surface Type	Cut Length (B type use)	V Cut Length (A type use)	V-Cut Length (C type use/100mm)	V Cut Length (C type use/85mm)	V-Cut Length (C type use/60mm)
Two Internal Corner WallSurface	Wall surface length -20mm	Wall surface length 0mm	Wall surface length -2mm	Wall surface length -2mm	Wall surface length -2mm
Two External Corner Wall Surface	Wall surface length +5mm	Wall surface length +9mm	Wall surface length +19.5mm	Wall surface length +16.5mm	Wall surface length +11.5mm
Internal/External Corner Wall Surface	Wall surface length -6mm	Wall surface length -4.5mm	Wall surface length -10mm	Wall surface length -8.5mm	Wall surface length -6mm

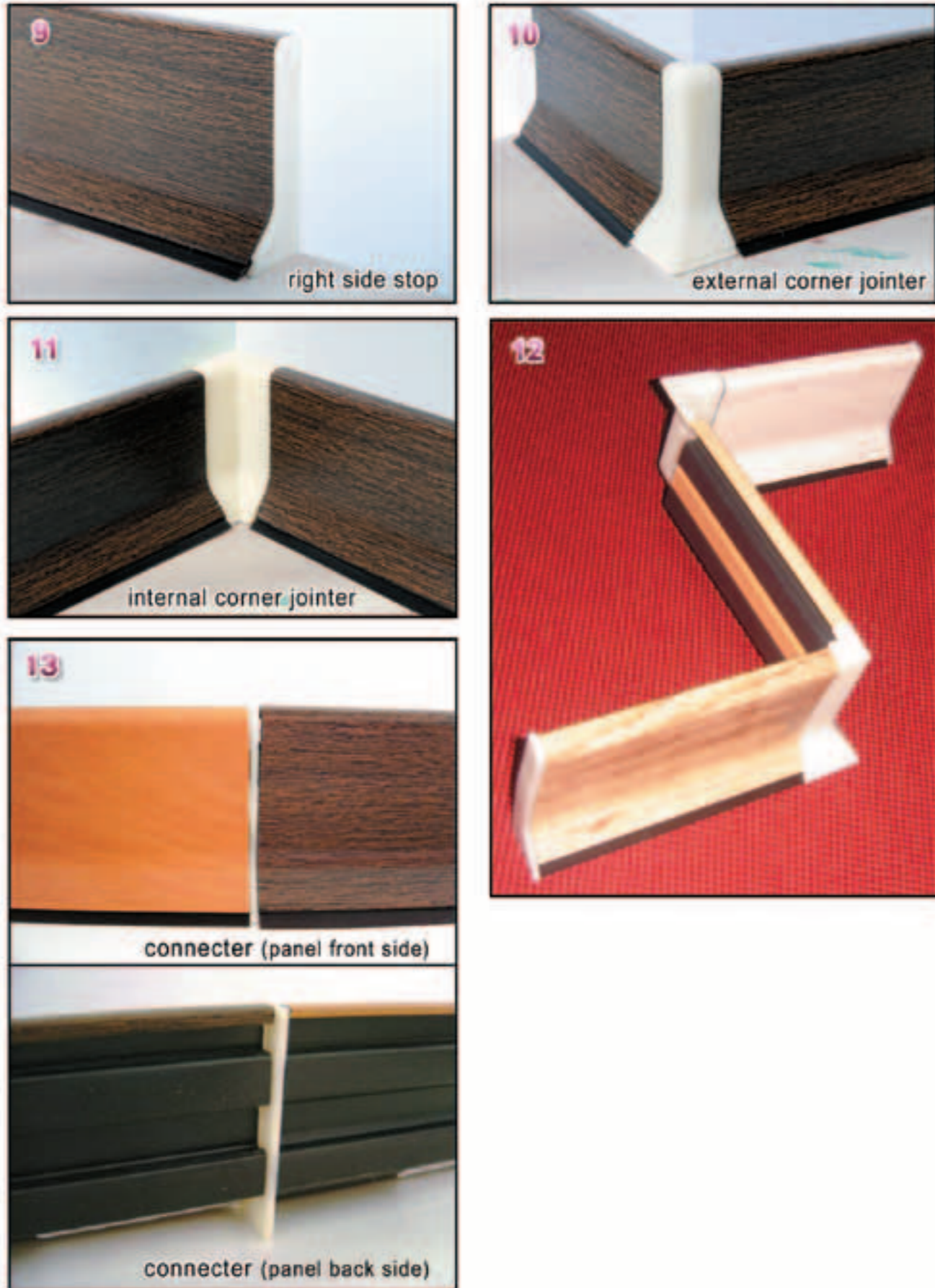
◆ INSTALLATION STEPS FOR PVC WALL SKIRTING

■ How to fix 6.0cm Baseboard Type



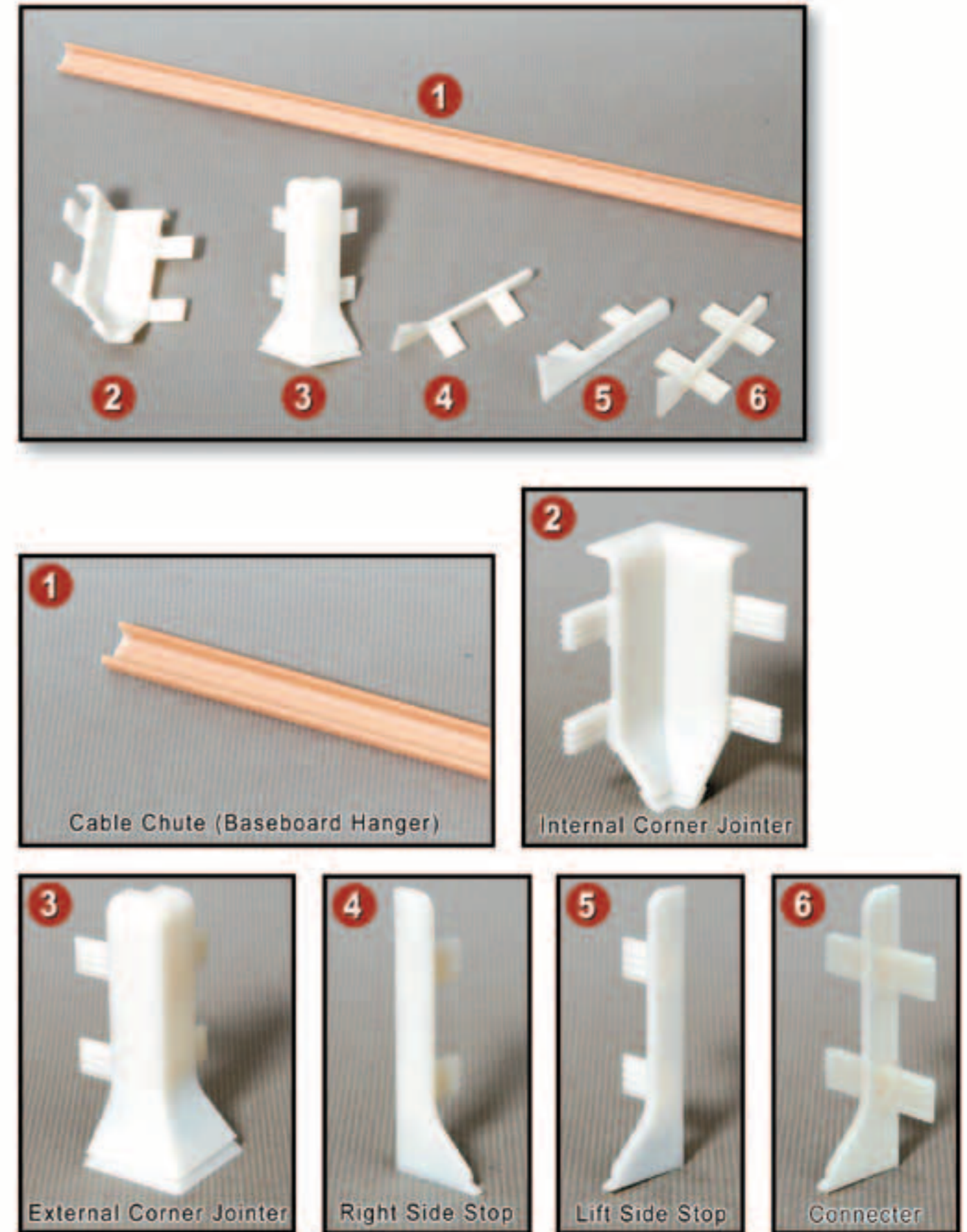
◆ INSTALLATION STEPS FOR PVC WALL SKIRTING

■ How to fix 6.0cm Baseboard Type



◆ INSTALLATION STEPS FOR PVC WALL SKIRTING

■ Joints for 6.0cm Baseboard Type





UNIQUE PLASTICS CORPORATION

P.O. BOX 108-258 TAIPEI, TAIWAN
TEL: (886-2) 2741-5391
FAX: (886-2) 2776-9998 & 2772-0866
<http://uniqueplastics.com>
e.mail: uniquepc@ms14.hinet.net



This catalog is made by UNI-PEPA PH-150.
Do not recycle together with the natural paper.
(300. 12. 2014, 34)